

Release Notes

DisasterAWARE 6.2.4



TABLE OF CONTENTS

New Features	1
Draw Tool Map Tips	1
Perimeter Measurement Option.....	1
Rectangle Measurement Label.....	2
Bug Fixes	2
User Interface.....	2
Language Translations.....	2
Hazard Filter	2
Identify	2
Administrative Functions	2
Known Issues	3
Street view	3
Products	3
Bookmarks.....	3
Area Brief	3
Drawing	3
Offline Mode	4
FAQ panel.....	4
Administrative Functions	4

NEW FEATURES

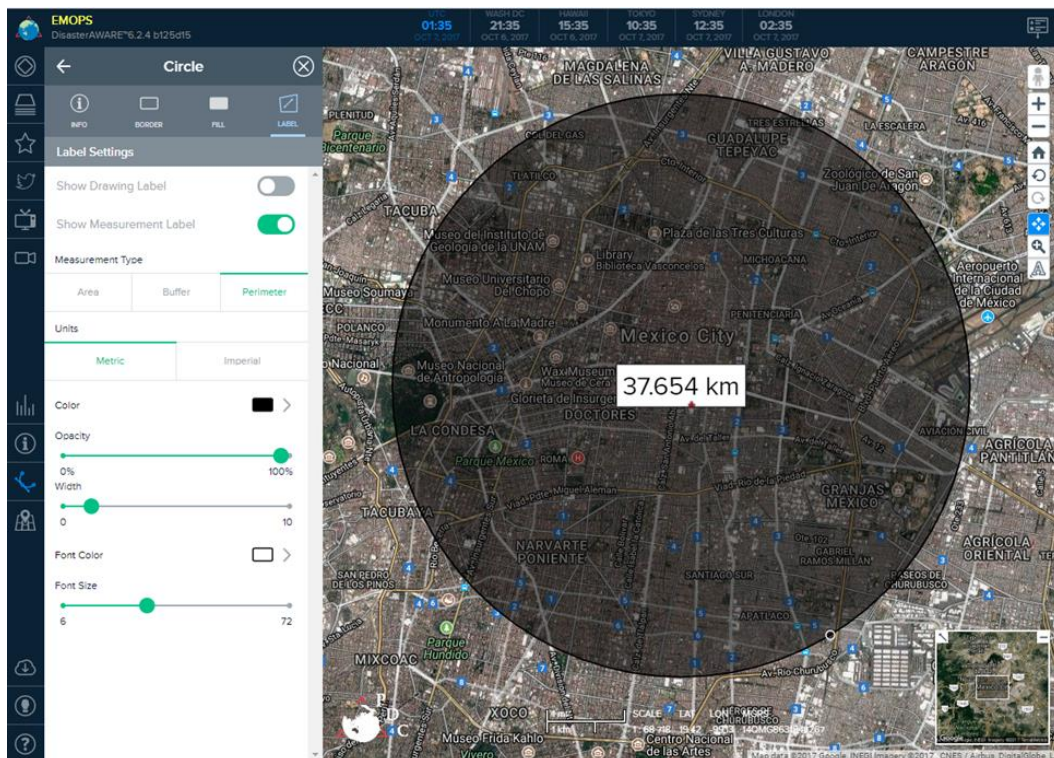
DRAW TOOL MAP TIPS

Drawing figures now have map tips that will display a figure's name and description. To see the map tip, click on the drawing figure when the *Drawing* palette is closed.



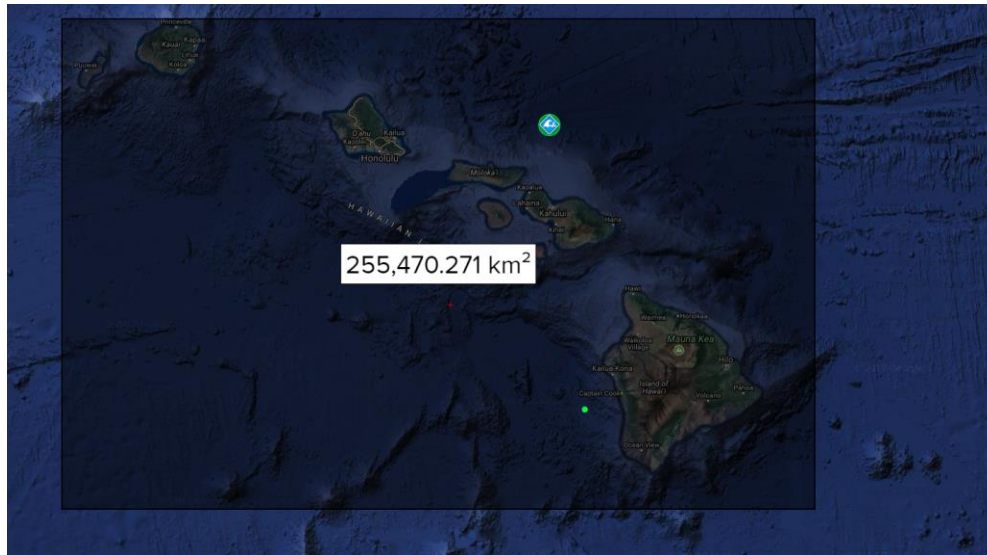
PERIMETER MEASUREMENT OPTION

The circle and polygon drawing figures now have a perimeter measurement label option.



RECTANGLE MEASUREMENT LABEL

We have added the option for a measurement label on the rectangle draw tool. Add a rectangle drawing figure and click on the *Label* tab to see label settings.



BUG FIXES

USER INTERFACE

- We have addressed bookmark and certificate issues that were preventing some users from loading the map. If you are unable to load the map, refresh your browser. If that does not address the issue, please notify disaster@pdc.org.

LANGUAGE TRANSLATIONS

- The *Help* panel will now be translated correctly.

HAZARD FILTER

- The *Save Hazard Filter* on the *User* palette has been fixed.

IDENTIFY

- If you export an Identify Summary that doesn't include any exportable data, the CSV file will now include a message indicating that "No layers with CSV were included in the Summary." In previous DisasterAWARE versions, a blank CSV file would be exported.
- The Zoom-To tool on identify reports is now working for all layers.

ADMINISTRATIVE FUNCTIONS

- Users with the *Hazard_Product_Admin* role will now see the *Edit* button on hazard map tips.

KNOWN ISSUES

Listed below are known issues, including available workarounds. Thank you for your patience while we address these items.

STREET VIEW

Issue: The menu palette gets stuck in the half-open position in Street View mode in IE 11.

Workaround: The menu palette will open up again when the legend is opened.

PRODUCTS

Issue: Products cannot be opened when an ad blocker is running on your browser.

Workaround: Turn off or pause the ad blocker to access products. For instructions, go to http://disasteraware.pdc.org/help/How_To_Disable_AdBlockers.pdf

BOOKMARKS

Issue: If you open an older bookmark that includes the *Tropical Cyclone Segments* or *Tropical Cyclone Positions* layers, you will not be able to turn off those layers.

Workaround: Refresh your browser and try re-creating the bookmark with the new *Positions and Segments* layer. If the older bookmark is your default bookmark, you will need to designate a new default bookmark without those layers.

Issue: The “Save to File” feature is currently not available for Safari users.

AREA BRIEF

Issue: Area Brief Coping Capacity and Vulnerability links are not accessible via the Area Brief panel.

Workaround: The links work in reports opened in a new tab. Users can also view Coping Capacity and Vulnerability information through the *Risk & Vulnerability* section of the same report.

DRAWING

Issue: Measurement labels do not appear in *Line* drawing figures exported as a KML file.

Issue: If a circle, polygon, or rectangle drawing figure is exported with the *Show Measurement Label* activated and the *Show Drawing Label* not activated, the measurement label will say “undefined” before the measurement.

Workaround: Activate both *Show Measurement Label* and *Show Drawing Label*.

Issue: On IE 11, Free Line and Free Polygons may shift away from their intended location (cursor position) while drawing.

Workaround: Utilize the Line and Polygon tools instead or switch to a different browser.

Issue: Draw tools are disabled when Google background maps are in 45-degree mode. This occurs in some areas when the user is zoomed in to the closest extent.

Workaround: Zoom out and try the draw tool again.

OFFLINE MODE

Issue: IE 11 has a cache limitation that may affect offline mode.

Workaround: Change your cache limit in IE settings.

FAQ PANEL

Issue: The Frequently Asked Questions panel does not expand to reveal the answers.

Workaround: To view the answers, go to <https://emops.pdc.org/help/faq.pdf>.

ADMINISTRATIVE FUNCTIONS

Issue: IE 11 users cannot change attachments for file products.

Workaround: Switch to a different browser or create a new product with the new file. You can hide the original product by adding it to the “Recycle Bin” parent folder.

Issue: File product names cannot contain special characters in the file name.

Workaround: Do not include special characters when naming files that will be added as products.