

The following provides a brief overview of applications and information that is made available as a service to the general public.

PDC Website: [www.pdc.org](http://www.pdc.org)

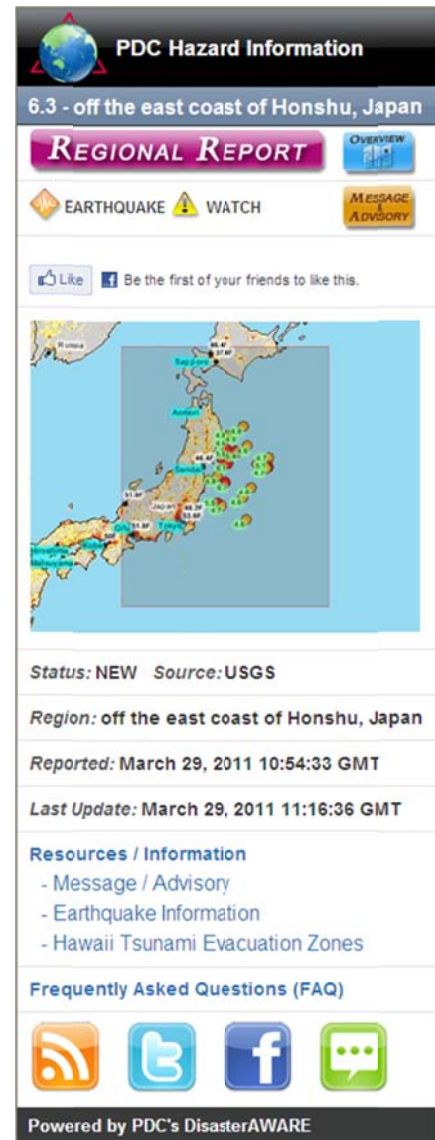
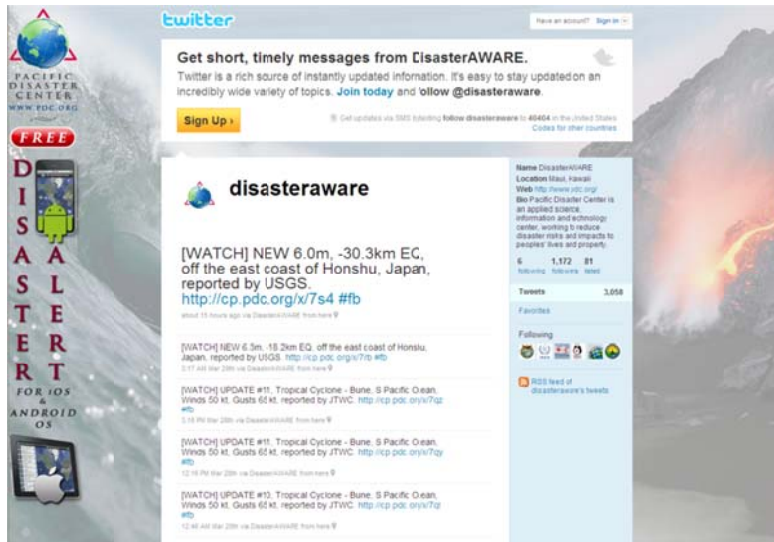
The screenshot displays the Pacific Disaster Center (PDC) website interface. At the top, there is a navigation bar with tabs for 'About Us', 'Solutions', 'Resources', 'Weather', 'News', and 'Publications'. A search bar is located on the left. The main content area is divided into several sections:

- Weather & Hazards:** A sidebar on the left with a '24h' update indicator, listing various weather and hazard forecasts such as 'COASTAL HAZARD MESSAGE', 'HIGH SEAS FORECAST', and 'INDIAN OCEAN TROPICAL DISTURBANCE STATEMENT'.
- Map:** A central interactive map showing global disaster locations with red and blue markers. It includes a 'LAYERS' panel for 'POPULATION DENSITY' and a search bar for 'Enter Location'.
- PDC Updates:** A section with an 'Auto-refresh in 14:10' timer, displaying recent news items like 'Mega-earthquake Off Japan Generates Pacific-wide Tsunami' and 'April is Tsunami Awareness Month... in Hawaii'.
- Disaster Tweets:** A section on the right with a '24h' update indicator, showing a message: 'No disaster tweets found for the last 12 hours. See listing for the last 24 hours.'
- Navigation & Footer:** A left sidebar with links for 'PDC in Print Newsletter', 'Hawaii Emergency Contacts', 'PDC Accomplishments', 'Partnerships', and 'APEC Workshop'. The bottom of the page features a footer with '1 | PDC Proprietary' and 'Rev. May 2011, Release 4.1.1'.

Explore the following sections:

- Weather & Hazards
- Front Map
- PDC Updates
- Disaster News
- Disaster Tweets
- Facebook
- Disaster Alert Page (links to download free mobile application)
- Solutions
- Resources
- Sign up for MyPDC Account

PDC Twitter Page: [www.twitter.com/disasteraware](http://www.twitter.com/disasteraware)



- DisasterAWARE monitors over 65 authoritative sources for incidents which are “potentially hazardous to people, property or assets” and posts them as Active Hazards. These postings are accessible from a number of sources, Twitter being one of them.
- The active link at the end of each short message provides additional information.
- The Tweets are geo-referenced so you can click on the “from here” magnifying glass which opens a map viewer.
- You can use Twitter’s SMS functionality to have Tweets delivered to your phone by texting **follow disasteraware to 40404**

PDC Facebook Page: [www.facebook.com/disasteraware](http://www.facebook.com/disasteraware)



- DisasterAWARE monitors over 65 authoritative sources for incidents which are “potentially hazardous to people, property or assets” and posts them as Active Hazards. These postings are accessible from a number of sources, Facebook being one of them.
- The active link at the end of each short message provides additional information.
- During emergency situations, additional information is posted by disaster management professionals.
- Links to other PDC resources and applications are conveniently available in the Facebook Tools section.

PDC Mobile Applications Page: [www.pdc.org/iweb/disasteralert.jsp](http://www.pdc.org/iweb/disasteralert.jsp)

[Home](#) » [Solutions](#)

## Disaster Alert Mobile Application

Get *free Disaster Alert* app developed by the Pacific Disaster Center on your mobile phones and devices! Now you can access the global hazard information anytime, anywhere. Available on [iTunes](#) for iOS (iPhone, iPad, iPod Touch), and [Android Market](#) (Android phones and tablets).



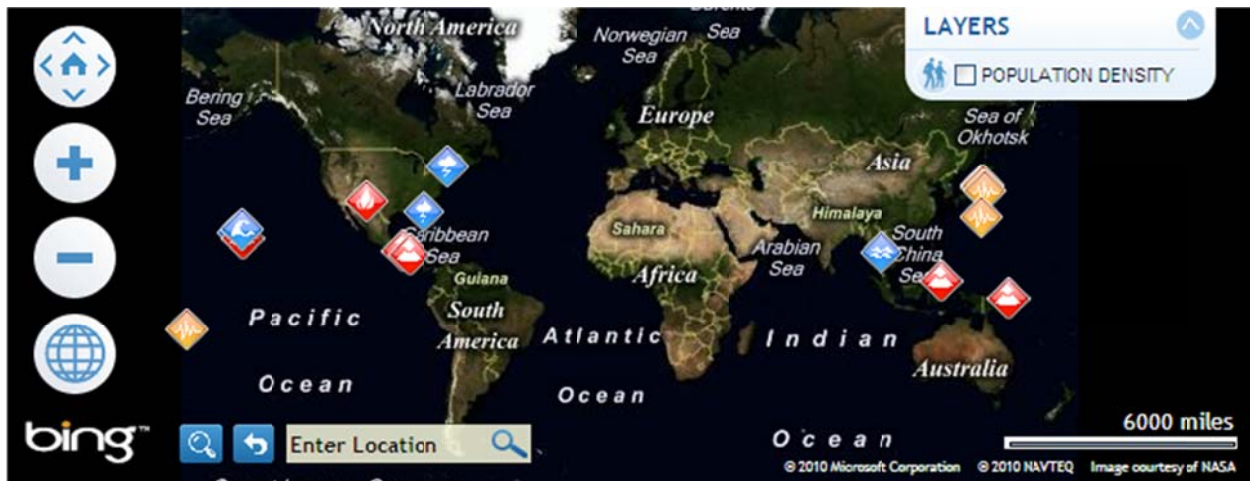
Snap this QR code with your mobile phone to learn more about this [popular app](#). New mobile phones come with QR readers, or you may download a QR reader from ScanLife for [iOS](#) or [Android](#).

Join the community of 388,000+ (and counting) global users who stay connected and safe with Disaster Alert.



- Links to download PDC free mobile applications are conveniently available from this webpage.

PDC Front Map Application: [www.pdc.org](http://www.pdc.org)



- Front Map provides a geospatial context for viewing global Active Hazards.
- Zoom in, Zoom Out, Pan and Home functions are available
- Hover over legend icons for a description
- Hover over map icons to get more information about the hazard
- Enter location to zoom to a geographic location (Yahoo! Application)
- Click on the Globe icon to load the PDC Global Atlas

PDC Global Natural Hazards and Vulnerabilities Atlas: [www.pdc.org/atlas](http://www.pdc.org/atlas)



*Atlas depicted above with Storm Intensity Zones, Tropical Storm tracks for 2009, and Google Hybrid Imagery visible*

PDC's Atlas provides access to historical and real-time information for a wide range of natural hazards including tropical cyclones, volcanic eruptions, earthquakes, tsunamis, floods and wildfires. Combining these hazards with other Atlas data on exposed populations and infrastructure, the Atlas can inform users of potential impacts from disasters. The Atlas also contains hazard model outputs, near-real time observations and forecasts of weather and ocean phenomena, high-resolution satellite imagery and situational awareness information for selected disasters supported by PDC.

Risk is assessed by evaluating both the hazards a community faces and its total vulnerability to those hazards. Utilizing the data above, PDC's Global Natural Hazards and Vulnerabilities Atlas can contribute significantly toward better assessment and mitigation of natural hazards.

### Using the PDC Atlas

The Atlas helps answer questions that arise both in periods of planning and in times of urgent need.

- What hazards/disasters are likely to occur in a given region?
- How often might they occur and how intense are they likely to be?
- What areas are currently exposed to an Active Hazard?
- How severe is the current/approaching event?
- How many people might be affected?
- Are lives at risk right now? Will they be?
- What is the potential impact on critical infrastructure in the region?
- Where should relief supplies and services be staged and when should they be moved?
- Is it appropriate to issue a warning or initiate an evacuation now?